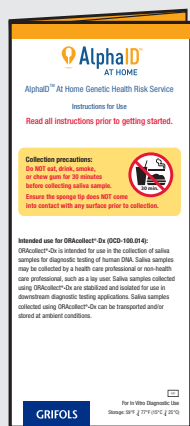
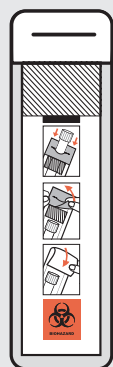




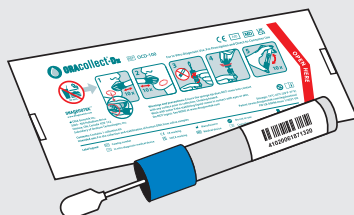
Saliva Collection Kit contents:



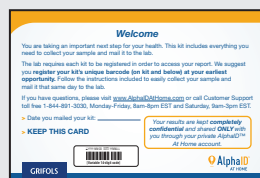
Instructions for Use



Bio-Specimen Bag



ORAc collect•Dx (OCD-100.014) in pouch, with your unique barcode on the tube



Record Card for you to keep with your unique barcode



Sleeve for Mailer Box with your unique barcode

Mailer Box for returning the collected sample (with prepaid return label)

By using the AlphaID At Home Genetic Health Risk Service, you agree to the Terms of Service at www.AlphaIDAtHome.com/Terms-of-Service/

Please note: The AlphaID At Home Genetic Health Risk Service is FREE. This includes the collection device, shipping, lab processing and access to your results. You or your insurance will not be billed.

Label legend:

	In vitro diagnostic medical device
	Manufacturer
	Caution, consult Instructions for Use
	Collect sample by (Use by)
	Catalog number
	Lot number
59°F / 15°C	Storage instructions
77°F / 25°C	

ORAc collect•Dx
REF: OCD-100.014
DNA Genetek Inc.
3000-500 Palladium Drive
Ottawa, ON, Canada K2V 1C2

ORAc collect•Dx (OCD-100.014) is made for Progenika Biopharma, S.A. by DNA Genetek Inc., a subsidiary of OraSure Technologies, Inc. Patent (www.dnagenetek.com/legalnotices)

AlphaID™ At Home Genetic Health Risk Service is provided by Progenika Biopharma, S.A. A Grifols company.

AlphaID At Home Genetic Health Risk Service and Grifols logos are trademarks or registered trademarks of Grifols. ORAc collect is a registered trademark of DNA Genetek Inc.

© 2022 Grifols, all rights reserved.
PL-0008/PD-PR-01189 Issue 2/2022-11



Saliva Collection Kit

Instructions for Use

Read all instructions prior to getting started.

Collection precautions:
Do NOT eat, drink, smoke, or chew gum for 30 minutes before collecting saliva sample.
Ensure the sponge tip does NOT come into contact with any surface prior to collection.



Intended use for ORAc collect•Dx (OCD-100.014):
ORAc collect•Dx is intended for use in the collection of saliva samples for diagnostic testing of human DNA. Saliva samples may be collected by a health care professional or non-health care professional, such as a lay user. Saliva samples collected using ORAc collect•Dx are stabilized and isolated for use in downstream diagnostic testing applications. Saliva samples collected using ORAc collect•Dx can be transported and/or stored at ambient conditions.

GRIFOLS

For In Vitro Diagnostic Use
Storage: 59°F / 15°C / 77°F / 25°C

IVD

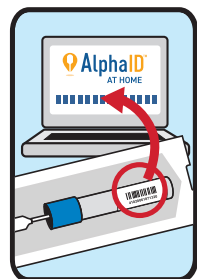
Warnings and precautions for ORAclect®-Dx (OCD-100.014):

- Read all instructions carefully prior to sample collection; not following instructions may result in inadequate sample and impact DNA yield and your results.
- For direct-to-consumer use with the AlphaID™ At Home Genetic Health Risk Service.
- For use in individuals 18 years of age and older.
- Choking hazard. Caution should be used when inserting sponge into the mouth.
- Sample donors with xerostomia (dry mouth) may not collect an adequate sample using these instructions, resulting in lower DNA yield and an invalid sample for use.
- If stabilizing liquid comes in contact with eyes or skin, wash with water. Do NOT ingest. See the Safety Data Sheet at https://www.AlphaIDAtHome.com/safety_data_sheet.pdf

Information on the AlphaID™ At Home Genetic Health Risk Service:

For information on the AlphaID™ At Home Genetic Health Risk Service, please visit www.AlphaIDAtHome.com.

Procedure



1 Register your kit

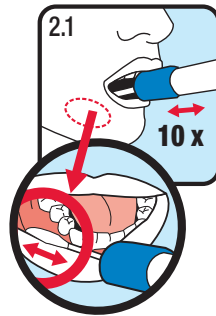
Before you collect your sample, register your unique barcode on the secure, confidential and HIPAA compliant website www.AlphaIDAtHome.com/REGISTER/

IMPORTANT: You must register your kit to access your report. Collect and mail your sample at your earliest convenience.

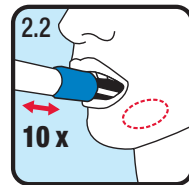


2 Collect sample

Open the package and remove the **Saliva Collection Device** without touching the sponge tip. Collect the sample following the instructions below:



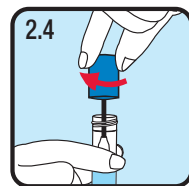
Place sponge as far back in the mouth as comfortable and rub along the lower gums (see close-up image) in a back and forth motion. Gently rub the gums **10 times**. If possible, avoid rubbing the teeth.



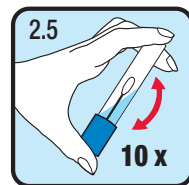
Gently repeat rubbing motion on the other side of the mouth along the lower gums for an additional **10 times**.



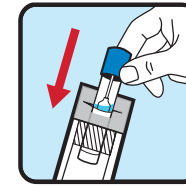
Hold the tube upright to prevent the stabilizing liquid inside the tube from spilling. Unscrew the blue cap from the collection tube without touching the sponge.



Turn the cap upside down, insert the sponge into the tube and close cap tightly.

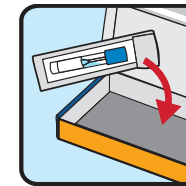


Invert the capped tube and shake vigorously **10 times**.



3 Seal sample

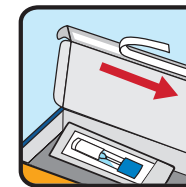
Place the tube containing your saliva sample into the **Bio-Specimen Bag** provided and seal tightly.



4 Place in Mailer Box

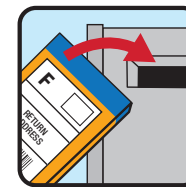
Place one sealed **saliva sample** into the **Mailer Box**.

IMPORTANT: Keep the Record Card containing your unique barcode.



5 Seal box

Using the adhesive strip located on the Mailer Box, seal the box tightly across its entire length.



6 Mailing instructions

Place the boxed sample into the mail or take it to the nearest postal location. A prepaid return label is located on the back of the Mailer Box.

Your service result report is kept confidential and can only be accessed with your unique barcode and password on the secure website <https://www.AlphaIDAtHome.com/View-Report/>



Questions?

For questions, contact Customer Support at 1-844-891-3030.

